



iGATE GW240-H

GPON ONT

iGate GW240-H is a 4-ports ONT Gigabit Ethernet device that supports IEEE 802.11a/b/g/n/ac and 2 voice ports which support VoIP. The device uses 2.4GHz and 5GHz dual band Wi-Fi, providing high-speed connectivity for connected devices.

It fully meets GPON ITU-T G.984 and OLT vendor independent. The product is suitable for using in household or small offices.

iGate GW040-H is a part of GPON total solution, which is developed by VNPT Technology, included: ONT, OLT and ONE Telco Platform management.



PRODUCT HIGHLIGHTS

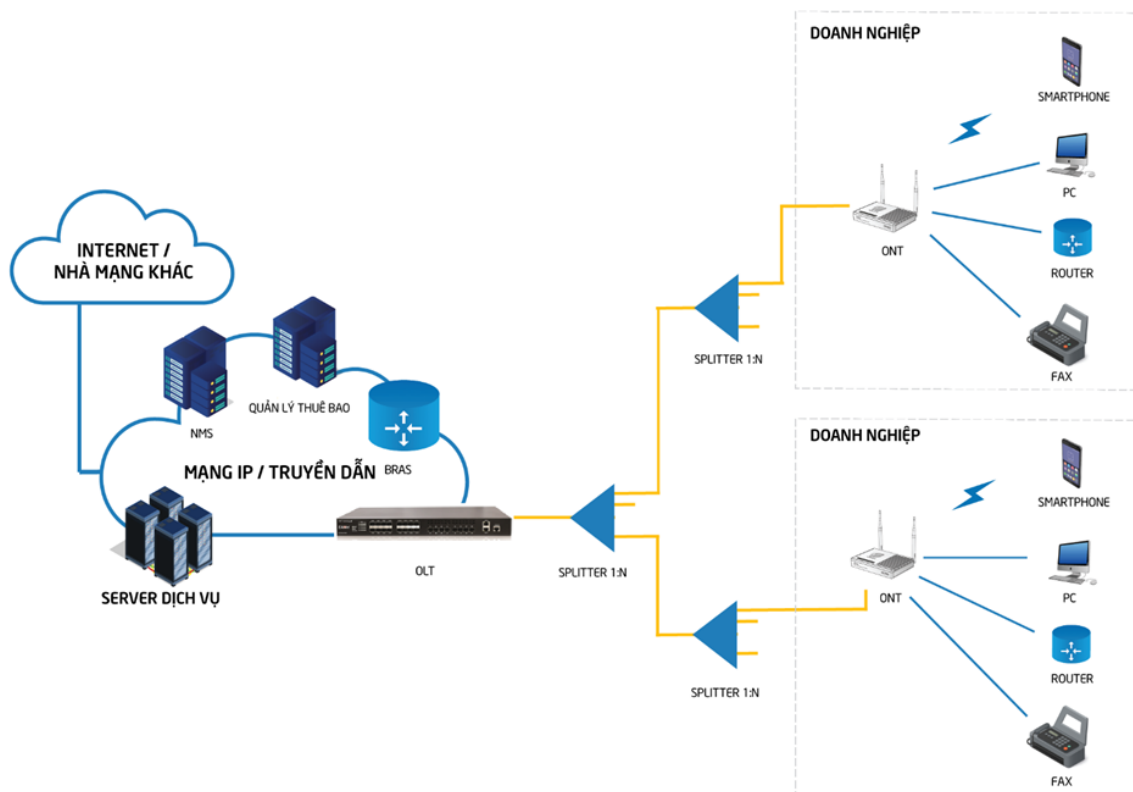
- 4-ports LAN 1Gbps
- Wi-Fi 802.11 a/b/g/n/ac dual band
- 2 phone ports integrated that enable cost-effective VoIP calling
- Various call features such as: caller ID, call waiting, call holding, call forwarding and

3-way conference calls

- Management by ONE Telco Platform

TYPICAL DEPLOYMENT MODELS

iGate GW240-H is suitable to deploy GPON such as FTTH, FTTB, FTTC, FTTN provide Internet, Voice over IP (VoIP) and Video service to the end-user.



FEATURES

GPON

- Compliant with ITU standards:
 - ITU-T G.984.4
 - ITU-T G.984.3
- 8 queues per T-CONT
- Physical Layer OAM (PLOAM) and OMCI
- Deactivation/Activation and re-register of the ONT

Ethernet

- 10/100/1000BASE-T interfaces with RJ-45 connector
- Auto-negotiation of rate and duplex mode
- Ethernet port auto-negotiation or manual configuration with media dependent interface crossover (MDI/MDIX)
- MAC Address Learning
- VLAN tagging/detagging per Ethernet port and marking/remarking of 802.1p
- VLAN stacking (Q-in-Q) and VLAN translation
- Support IGMPv2/v3 snooping

VoIP

- SIP (RFC3261) compliant
- DTMF and pulse number receiving
- DTMF encryption algorithm (RFC2833)
- Support in-band DTMF tone sending/receiving and out-band DTMF signaling with RTP

- G.711 a/u, G.729 CODEC, and G.722 coding/encoding algorithm
- Voice Activity Detectors (VAD) and Comfort Noise Generation (CNG)
- ITU-T T.38 fax, and T.30 fax transparent transmission (uncontrolled, RTCP control, and SS control)
- Supplementary services: caller ID display, call waiting, call forwarding.

Security

- MAC / IP / Packet / Application / URL Filtering
- NAT and SPI Firewall
- Denial of Service (DoS)
- Firmware digital signature

OMCI

- OMCI configuration management (including the GEM port, T-CONT and VLAN configurations)
- OMCI query management (including the device information and Ethernet port status)
- OMCI alarming

Device Maintenance

- Local service configuration, and software upgrade on the Web page
- Device management, and software upgrade through OMCI
- Query of the information about the ONT optical transceiver
- Reporting the Dying_Gasp alarm when the ONT is powered off

Others

- System information: Software version, Connection Status and Packet Statistics
- WAN connection type: Support PPPoE, Dynamic and Static IPoE, Bridge mode and Multi Wan connection simultaneously

- Internet Protocol and Advanced Features: Support IPv4 and IPv6, DHCP (Dynamic Host Configuration Protocol), DHCP relay, DHCPv6, NAT (Network Address Translation), DLNA Server, USB Storage, Printer Server, Static Routing, VPN (PPTP, L2TP, IPSec) Pass through, Interface Grouping, VLAN tag/untag on Ethernet Port, DNS Relay, DDNS, IGMP snooping v2/v3
- Virtual server, DMZ, ACL(Access Control List), UPnP, NAT and SPI Firewall, MAC / IP / URL Filtering, Denial of Service (DoS), QoS, (802.1p), Support 32 T-CONT/256 GEM

TECHNICAL SPECIFICATIONS

Interface

- LAN 4x 10/100/1000Base-T
- Optical 1x SC/APC
- USB 1x USB3.0

Wi-Fi

- Standard IEEE 802.11 a/b/g/n/ac

- Frequency Band 2.4GHz:
2.400 ÷ 2.4835GHz,
OBW = 20/40Mhz,
Auto Channel Selection
Band 5GHz:

- SSID 5170 ÷ 5.815GHz,
OBW = 20/40/80Mhz,
Auto Channel Selection
8 SSID, 4 per 2.4Ghz and
4 per 5GHz
- Security Supports 64/128 bit
WEP, WPA/WPA2, WPA-
PSK/WPA2-PSK
encrypted security,
Wireless MAC Filtering,
Hidden SSID, WPS
- Antenna 5dBi, MU MIMO 2x2
- Throughput Up to 1.2Gbps
- CCU 32 CCUs on each band
2.4GHz & 5GHz

GPON

- Downlink speed 2.488Gbps
- Uplink speed 1.244Gbps
- Optical class Laser Class B+
- Receive (Rx) 1490nm
- Transmit (Tx) 1310nm
- Tx Power 0.5dBm ÷ 5dBm
- Rx Sensitivity -28dBm ÷ 8dBm

Power

- Power supply 12V-1.5A, feed through
an external AC/DC
adapter
- Power Consumption < 8W

Other

- Dimension 225x38x140mm
- Weight ~ 400g
- Operating Humidity 5% ÷ 90%
Non- condensing
- Operating Temperature 0°C ÷ 40°C

CUSTOMER CARE & TECHNICAL SUPPORT CENTRE



Address: 1st floor, VNPT Technology Building, No. 124, Hoang Quoc Viet Str., Cau
Giay Dist., Hanoi, Vietnam



Telephone: +84.24.3750.6666 (24/7)



Email: support@vnpt-technology.vn